



输出功率: 约0.5~20W
精密金属齿轮减速电机

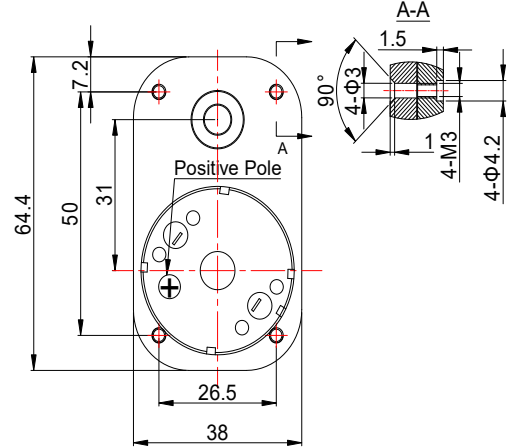
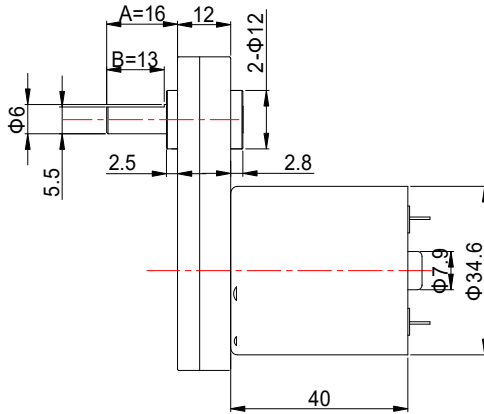
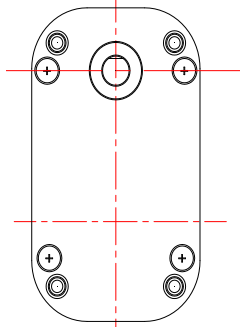
典型应用: 智能家居
智能机器人
自动售货机
阀门

OUTPUT: APPROX 0.5~20W
Precision Metal Gear Motor

Typical Applications: Smart Home Appliance
Smart Robot
Vending Machine
Valve

1. OUTLINE DRAWING:

UNIT:MM



View:



Customizable Parameters:

1. Length A and B
2. Electric Performance
3. Output shaft specifications
4. Reduction Ratio

WEIGHT: 230g(Approx)

2. GEARBOX REDUCTION RATIO:

Gearbox Length (mm)	Stage Number	Reduction Ratio						Rated Torque	Bearable Maximum Instant Torque
		kg.cm							
64.4 x 38 x 12	3	36/1	40/1	60/1	67/1			3.0	6.0
	4	85/1	90/1	114/1	120/1	200/1		6.0	10.0
	4	96/1	101/1	128/1	135/1	225/1		8.0	15.0
	5	400/1	450/1					10.0	20.0

3. MOTOR PERFORMANCE :

1N.m≈10.2kg.cm≈14.2oz.in

MODEL	REDUCTION RATIO	VOLTAGE		NO LOAD		AT MAXIMUM EFFICIENCY				STALL	
		OPERATING RANGE	NOMINA	SPEED	CURRENT	SPEED	CURRENT	TORQUE	OUTPUT	TORQUE	CURRENT
			V	rpm	A	rpm	A	kg.cm	W	kg.cm	A
38GF3540-36-24400	36/1	5.0~25.0	24.0	400	0.15	335	1.2	3.0	10.31	27.2	9.5
38GF3540-60-24240	60/1	5.0~25.0	24.0	240	0.15	213	1.2	5.0	10.92	44.1	9.5
38GF3540-135-24105	135/1	5.0~25.0	24.0	105	0.09	94	0.64	10.0	9.64	93.5	9.5